



Parade Information

Date: Saturday, December 9
Line-Up Begins: 9:00 a.m.
Parade Start: 10:30 a.m.
Parade Staging Area: Old Airport Rd.

Contact Information

Nicole Sweat, Program Supervisor
Phone: (828) 687-0751
Fax: (828) 687-7133
E-mail: n.sweat@fletchernc.org

Theme

The theme for the 2017 Christmas Parade is "Let it Snow." To be eligible for judging, please decorate your parade entry according to the theme and clearly display your line-up number. Judging will be done before the Parade kicks off. Awards will be given to: Best Overall Entry, Best Commercial Entry, Best Non-Commercial Entry, Best Dance/Musical Group. Winners will be contacted after the parade and posted on our web site. **Remember only entries reflecting the theme will be judged.**

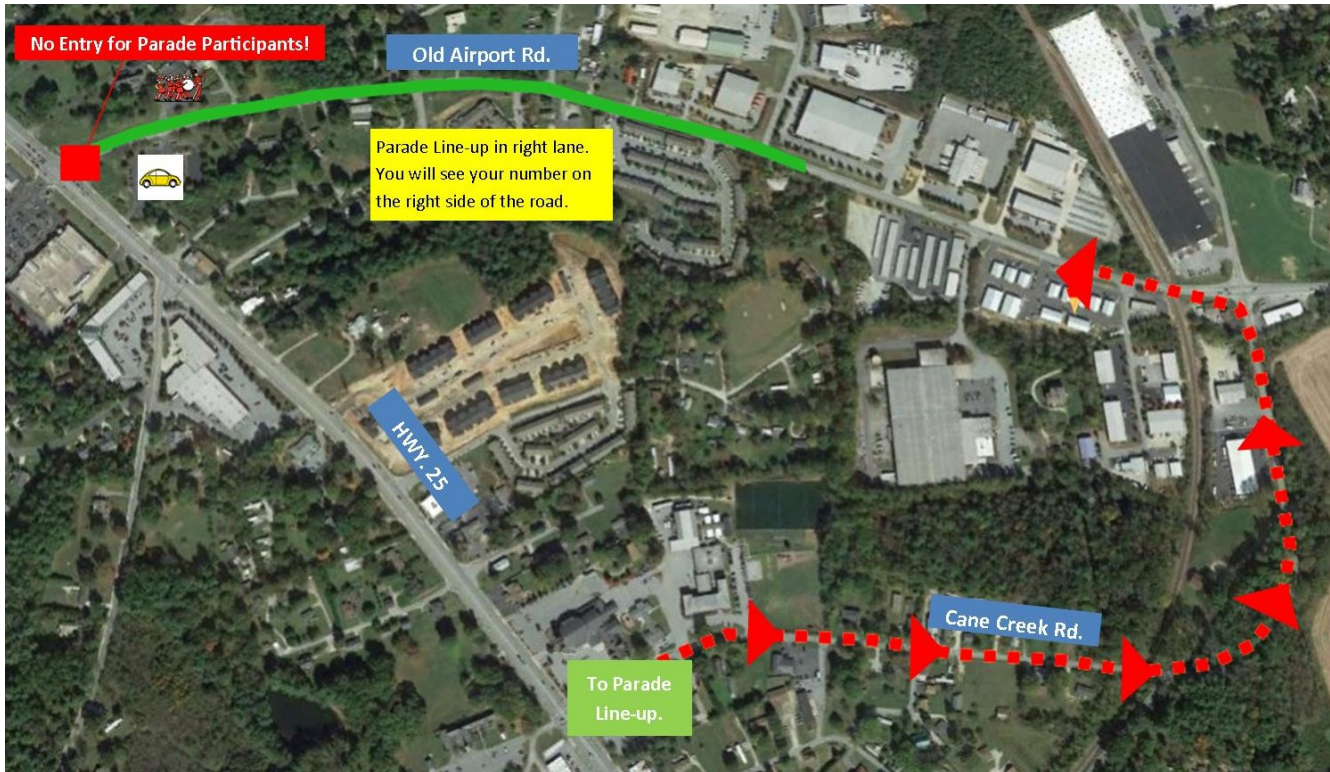
Rules and Guidelines

1. Entry forms and payment (if applicable) must be post marked no later than Monday, November 27.
2. All trailers/floats must be in position no later than 9:15 a.m. All other entries must be in position no later than 9:45 a.m.
3. Group leaders are responsible for informing group participants of parade information and rules.
4. The Town of Fletcher reserves the sole right to use the character of Santa Claus for the parade finale. Other Santa entries will not be permitted.
5. Throwing candy or other items from vehicles, floats, horses, etc. is not permitted. Candy or other items may be distributed by walkers.
6. The driver of any vehicle must be at least 18 years of age. All drivers must possess a drivers license and hold valid insurance.
7. All parade participants are expected to perform courteously, in good taste and with safety in mind at all times.
8. Participants are not allowed to get on and off vehicles or trailers once the parade starts moving.
- 9. All trailers with riding participants MUST have safety rails!**
10. Units will stand no higher than 13 ft. tall and 12 ft. wide.
11. All parade entries must move forward continuously. Any dance being performed must move in a forward

How to get to the Parade Line-up

For the 2017 Parade, we are asking all participants to enter the parade line-up area via Old Cane Creek Road (Traffic Light by CVS). Just follow the Parade Line-Up Signs down Cane Creek Road, then make a left onto Old Airport Road and find your line-up number. This includes all vehicles, floats, antique cars, etc participating in the parade. This also includes anyone dropping off participants! Please be sure to let everyone in your group know!

Just remember to drive slow!



Parade Line-Up

Antique Cars

	Group	Assigned Location	# of Cars
1	Carolina Mountain Car Club	First Citizens Bank Lot	15
2	Bill Godfrey	First Citizens Bank Lot	12
3	WNC Wheels	First Citizens Bank Lot	15
4	Henderson County Corvette Club	First Citizens Bank Lot	20

Beginning at 10:20 a.m. antique cars will be invited to cruise down HWY 25 to help kick off the Annual Christmas Parade. Please park at the First Citizens Lot and please back in. All cars should travel down HWY 25 no more than 10 miles per hour.

Numerical Line-Up

Line Up Number	Group Name	Space Allotted
1	Police Lead Car	15
2	Henderson County Honor Guard	15
3	Grand Marshal - Lyn Cordell	15
4	Mayor Whiteside	15
5	Fletcher Town Council	60
6	Henderson County BOC - Hawkins	15
7	Henderson County BOC - Edney	15
8	Henderson County BOC - Messer	15
9	West Henderson HS ROTC	15
10	Fletcher Fire and Rescue	40
11	Cub Scout Pack 602	24
12	Boy Scout Troop 602	15
13	Asheville Tourists	12
14	Destination Church	30
15	Miss American Dream	17
16	WNC Toys for Tots Tractor Run	100
17	Girl Scout Troop 02910	15
18	Charlie's Angel Animal Rescue	20
19	Mills River Baptist Church	40
20	Fletcher Towing	28
21	Avery's Creek Elementary	60
22	TD Bank	12
23	Greater New Zion Baptist Church	24
24	Henderson County Rescue Squad	20
25	Prana Chiropractic & Wellness Center	15
26	Anchor Broadcasting	???
27	Wize Home Direct	32
28	Militia Fitness	20
29	St. John Baptist Church	???
30	American Heritage GIRLS Troop NC0058	45
31	Two Men and a Truck	35
32	Girl Scout Troop 2931	15
33	Surf N Brew	15
34	Fletcher First Baptist Church	31
35	Fletcher First Baptist Church	34
36	Fletcher First Baptist Church	35
37	Fairview 66	26
38	Camp GLOW	28
39	Bake it Up	???
40	Cub Scout Pack 624	28

Continues on next page.

Numerical Line-Up (Continued)

Line Up Number	Group Name	Space Allotted
41	Girl Scout Troop 02198	15
42	Mountain Home Health & Rehab	38
43	West Henderson HS Marching Band	Church Lot
44	Fletcher Fire and Rescue (Santa)	60
45	Riding on Faith Ministries	45
46	School House Farm	???
47	Asheville High Riders 4-H	???
48	Mann Family	???
49	Homestead Farms	???

Alphabetical Line-Up

Line Up Number	Group Name	Space Allotted
30	American Heritage GIRLS Troop NC0058	45
26	Anchor Broadcasting	???
47	Asheville High Riders 4-H	???
13	Asheville Tourists	12
21	Avery's Creek Elementary	60
39	Bake it Up	???
12	Boy Scout Troop 602	15
38	Camp GLOW	28
18	Charlie's Angel Animal Rescue	20
11	Cub Scout Pack 602	24
40	Cub Scout Pack 624	28
14	Destination Church	30
37	Fairview 66	26
10	Fletcher Fire and Rescue	40
44	Fletcher Fire and Rescue (Santa)	60
34	Fletcher First Baptist Church	31
35	Fletcher First Baptist Church	34
36	Fletcher First Baptist Church	35
20	Fletcher Towing	28
5	Fletcher Town Council	60
41	Girl Scout Troop 02198	15
17	Girl Scout Troop 02910	15
32	Girl Scout Troop 2931	15
3	Grand Marshal - Lyn Cordell	15
23	Greater New Zion Baptist Church	24
7	Henderson County BOC - Edney	15
6	Henderson County BOC - Hawkins	15
8	Henderson County BOC - Messer	15
2	Henderson County Honor Guard	15
24	Henderson County Rescue Squad	20
49	Homestead Farms	???
48	Mann Family	???

Alphabetical Line-Up (Continued)

Line Up Number	Group Name	Space Allotted
4	Mayor Whiteside	15
28	Militia Fitness	20
19	Mills River Baptist Church	40
15	Miss American Dream	17
42	Mountain Home Health & Rehab	38
1	Police Lead Car	15
25	Prana Chiropractic & Wellness Center	15
45	Riding on Faith Ministries	45'
46	School House Farm	???
29	St. John Baptist Church	???
33	Surf N Brew	15
22	TD Bank	12
31	Two Men and a Truck	35
9	West Henderson HS ROTC	15
43	West Henderson HS Marching	Church Parking Lot
27	Wize Home Direct	32
16	WNC Toys for Tots Tractor Run	100

Parade Line Up Information

The parade staging area will be on Old Airport Rd. Groups will line up in number order beginning at First Citizens Bank and will continue toward Cane Creek Rd. **All parade entries should enter Old Airport Rd. via Old Cane Creek Rd. or Mills Gap Rd.** Line-up numbers will be clearly marked along the roadside. All trailers/floats must be in position **no later than 9:15 a.m.** All other entries must be in position **no later than 9:45 a.m.**

Antique Car Parade

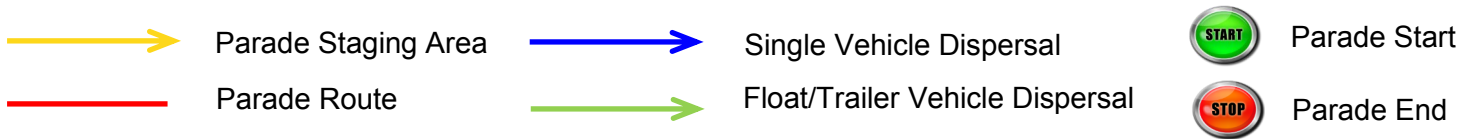
Beginning at 10:20 a.m. antique cars will be invited to cruise down HWY 25 to help kick off the Annual Christmas Parade. All Antique Cars should park in the First Citizens Bank Lot. Please enter the First Citizens Lot from the Old Airport Road Entrance via Cane Creek Rd.

Horses

Please drop off horses at the parade line-up. If possible, have a driver park the trailers at the Fletcher Public Works Building (Parish Municipal Drive). At the conclusion of the parade you can make a left on Howard Gap Road then make the next left on Parrish Municipal Drive to return to your trailers.

Parade Dispersal

The Christmas Parade will end at Blue Sky Cafe (3987 Hendersonville Rd.) Single vehicle entries will be asked to continue down HWY 25 to exit the parade area. Walking groups will be asked to leave the roadway to the right onto the side walks. Floats/Trailers carrying groups will be directed to an unloading area to unload passengers on the right side of HWY 25. After unloading, you may continue down HWY 25 to exit the parade area or follow staff to u-turn, and wait for the parade to conclude so you can head North on HWY 25. Please follow directions from parade staff and please be cautious of pedestrians!



Please remember new rules for 2017.....

Participants are not allowed to get on and off vehicles or trailers once the parade starts moving.

All trailers with riding participants MUST have safety rails!

If you have any questions, please contact Nicole Sweat at 828-687-0751 or n.sweat@fletchernc.org.

**Thank you for participating in the 2017 Fletcher
Christmas Parade!**